



Mayor Bryan Nelson

State of the City
2018





Population & Statistics

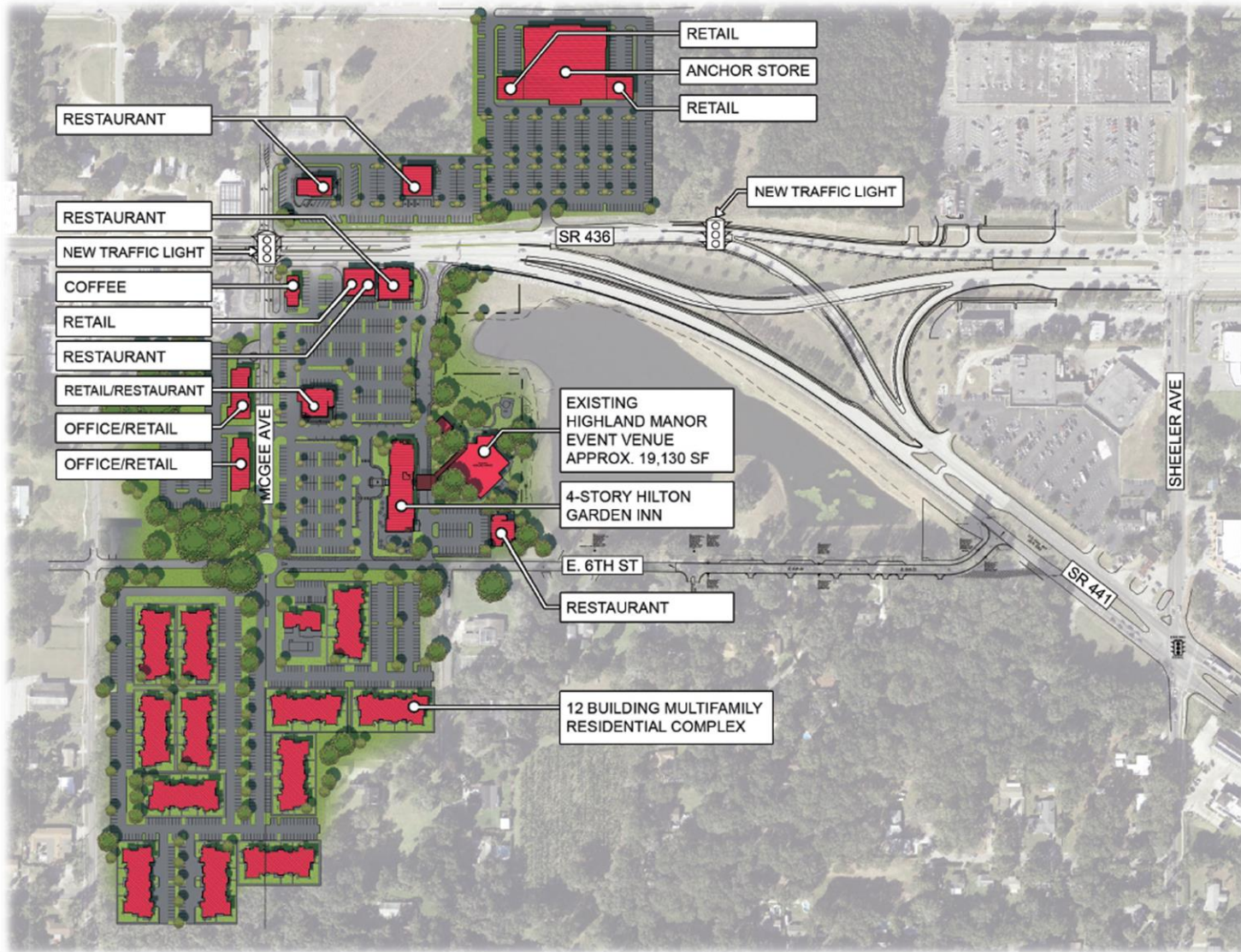
As of April 2018 (BEBR)

- Population: 51,676
- Households: 19,279
- Persons per household: 2.68 pph
- Size: 34.486 sq. miles (22,071 acres)

Note: Apopka grew by 1,926 people from April 2017 to March 2018.
This is the largest per year increase in over 30 years

Population data supplied by: University of Florida Bureau of Economic and Business Research





- **Apopka City Center**
 - 34.7 acres total
 - Highland Manor - preserved
 - Hilton Garden Inn
 - Retail
 - Restaurants
 - Multi-family Residential
 - Intersection redevelopment – U.S. 441, S.R. 436 & Main Street
 - New Traffic signals at McGee Ave. and intersection of U.S. 441 and S.R. 436

Apopka City Center - Hilton Garden Inn



SITE DATA:
LOT 1: 3.33 AC

OPEN SPACE: 20.74%

EXISTING USE: VACANT LAND
PROPOSED USE: COMMERCIAL

BUILDING STORIES: 4 STORIES
BUILDING MAX HEIGHT: 100'

TOTAL ROOMS: 114 ROOMS

BUILDING AREAS:
1ST FLOOR: 18,508 SF
2ND FLOOR: 17,463 SF
3RD FLOOR: 17,463 SF
4TH FLOOR: 17,463 SF

GROSS BUILDING AREA: 70,894 SF

Parks & Recreation

- Northwest Recreation Complex
- Kit-Land-Nelson Park
 - Splash Pad
 - Restroom facility
 - Walking path & parking
- KaBOOM Playground(s)
 - Lake Ave.
 - Alonzo Williams Park



○ Northwest Recreation Complex

- 316 acres
- Amphitheater:
Seating for 1,500 and lawn seating for 5,000
- Additional Parking

Tournaments:

- ✓ 74 Tournaments
- ✓ Over 44,000 Participants per year for
Baseball, Soccer, Lacrosse and Frisbee

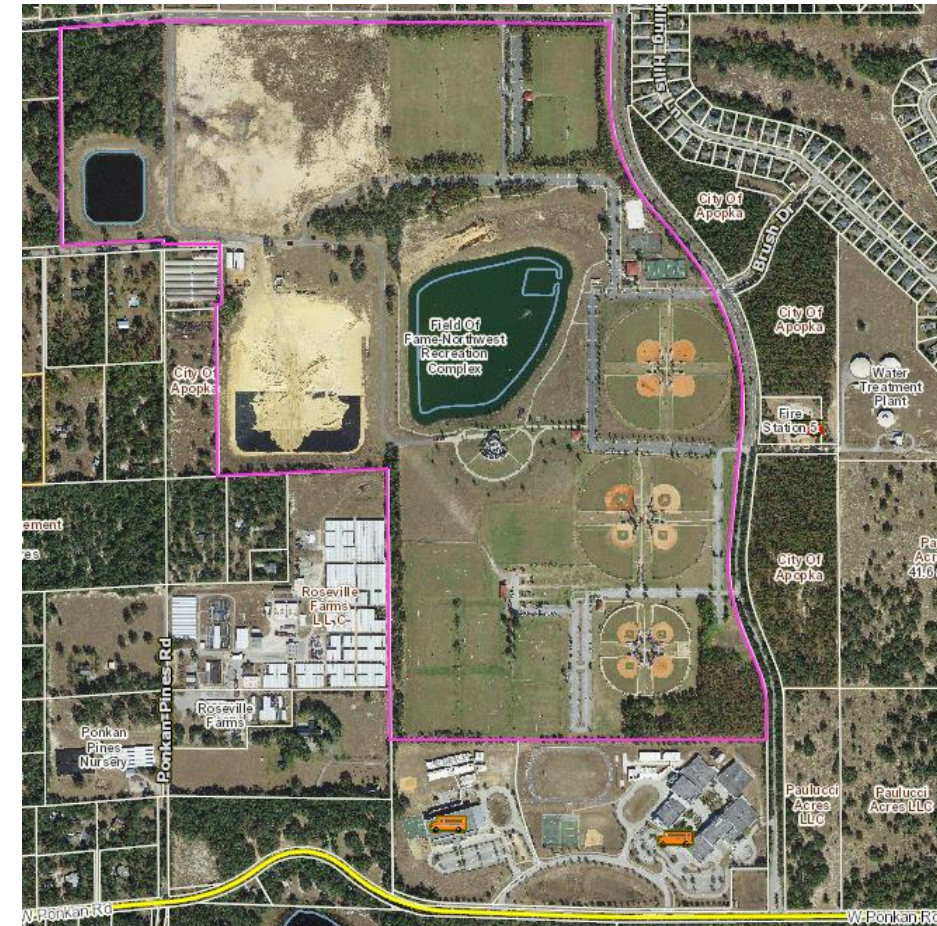
Outside Entities:

- ✓ 88 Teams
- ✓ 1,440 participants – APK Little League,
Pop Warner & AAU FB

Parks & Recreation Run Programs:

- ✓ 2,022 participants – Soccer, Basketball,
Football & Softball

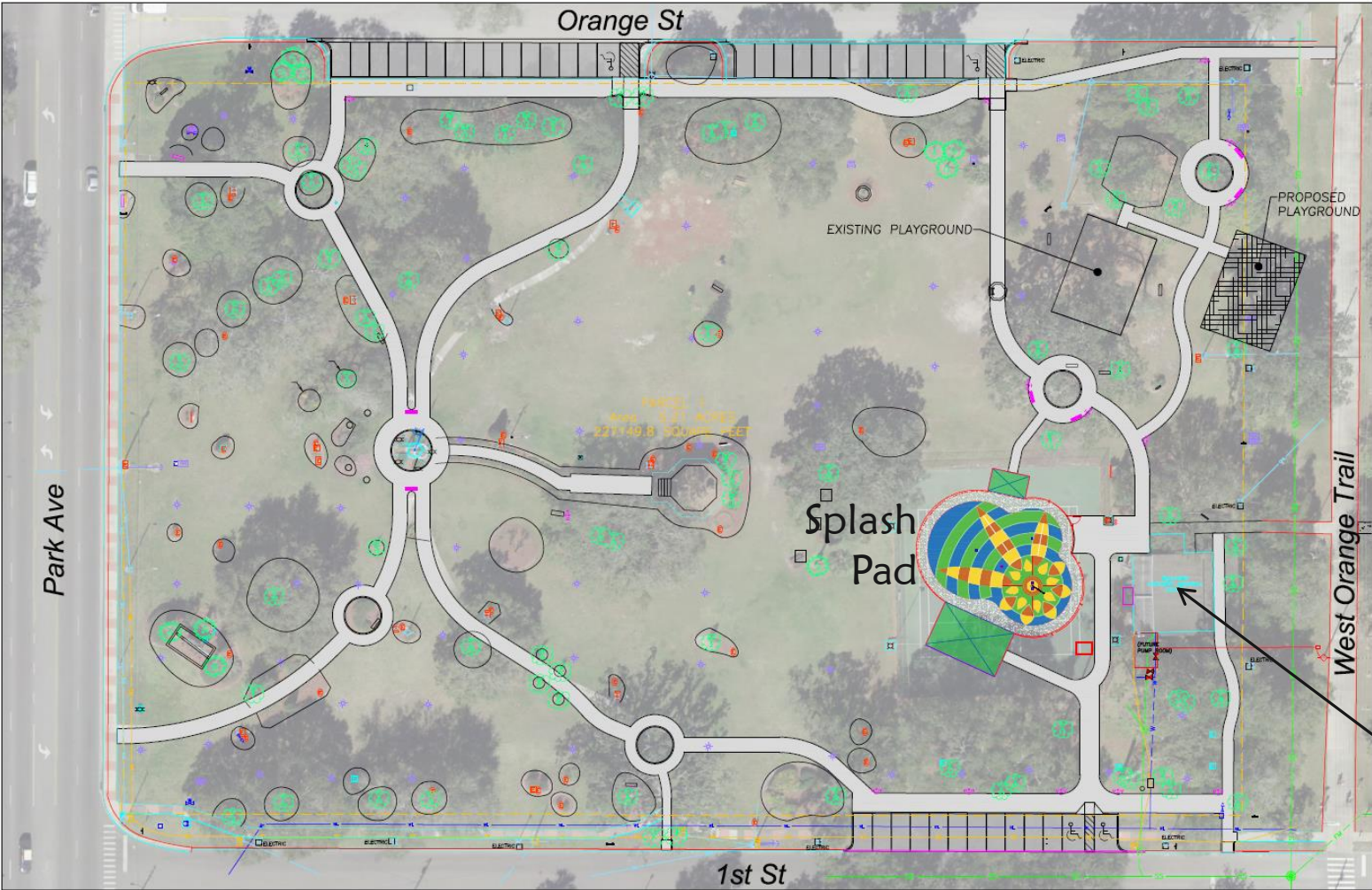
Total Number of Participants per year: 50,000



○ Kit-Land-Nelson Park

- Splash Pad
- Walking path & parking

2,900 feet new concrete trail



○ Restrooms

○ 13 new parking spaces on south side



○ Kit-Land-Nelson Park

➤ Splash Pad

- Up to 74 kids at a time
- Weekends only for about 2 months, with over 500 kids each weekend and over 3,700 total
- 4,800 sq. ft.
- 42 water soaking spray jets
- 40 gallon water bucket
- 301 gallons per minute
- Shade covers
- Picnic tables



○ Alonzo Williams Park

- Billie Dean Community Center ~ 4,900 sq. ft., with media room and community space; 17 parking spaces; and about \$1 million

○ Playground

- Lake Avenue Park ~ Community construction completed on April 8, 2017
- Alonzo Williams Park ~ Community construction completed on October 19, 2018

Build pictures:



Eco-Tourism & Conservation

- Bear-proof Trash Cans
 - \$85,000 grant from the Florida Fish & Wildlife Conservation Commission
 - \$50.00 for homeowners, or \$25.00 if 10 neighbors on the same street agree to use the new trash cans.
 - Over 400 bear-proof trash cans are available.
 - Wekiva Glen subdivision has already agreed to replace all their cans.



- “Hickerson” – 69.5 acres preserved in land exchange with Saint John’s River Water Management District (SJRWMD)
- Gateway Birding Park – MOU between Apopka and the Orange Audubon Society

Hickerson Property Map



Fifth Place: *Eye See You – Alligator Eye*
Locale where photographed: Lake Apopka Wildlife Drive
Photographer: Alayna Hew, Apopka
 Member Orange Audubon Society



Honorable Mention: *Painting with a Twist – Painted Bunting*
Locale where photographed: Lake Apopka Wildlife Drive
Photographer: Andria Hoag, Ocoee
 Member Orange Audubon Society



“See you in Apopka on the Lake Apopka Wildlife Drive”



© Jan Pewsey

Honorable Mention: *The Waving Otter – River Otter*
Locale where photographed: Lake Apopka Wildlife Drive
Photographer: Jan Pewsey, Ocoee
Member Orange Audubon Society

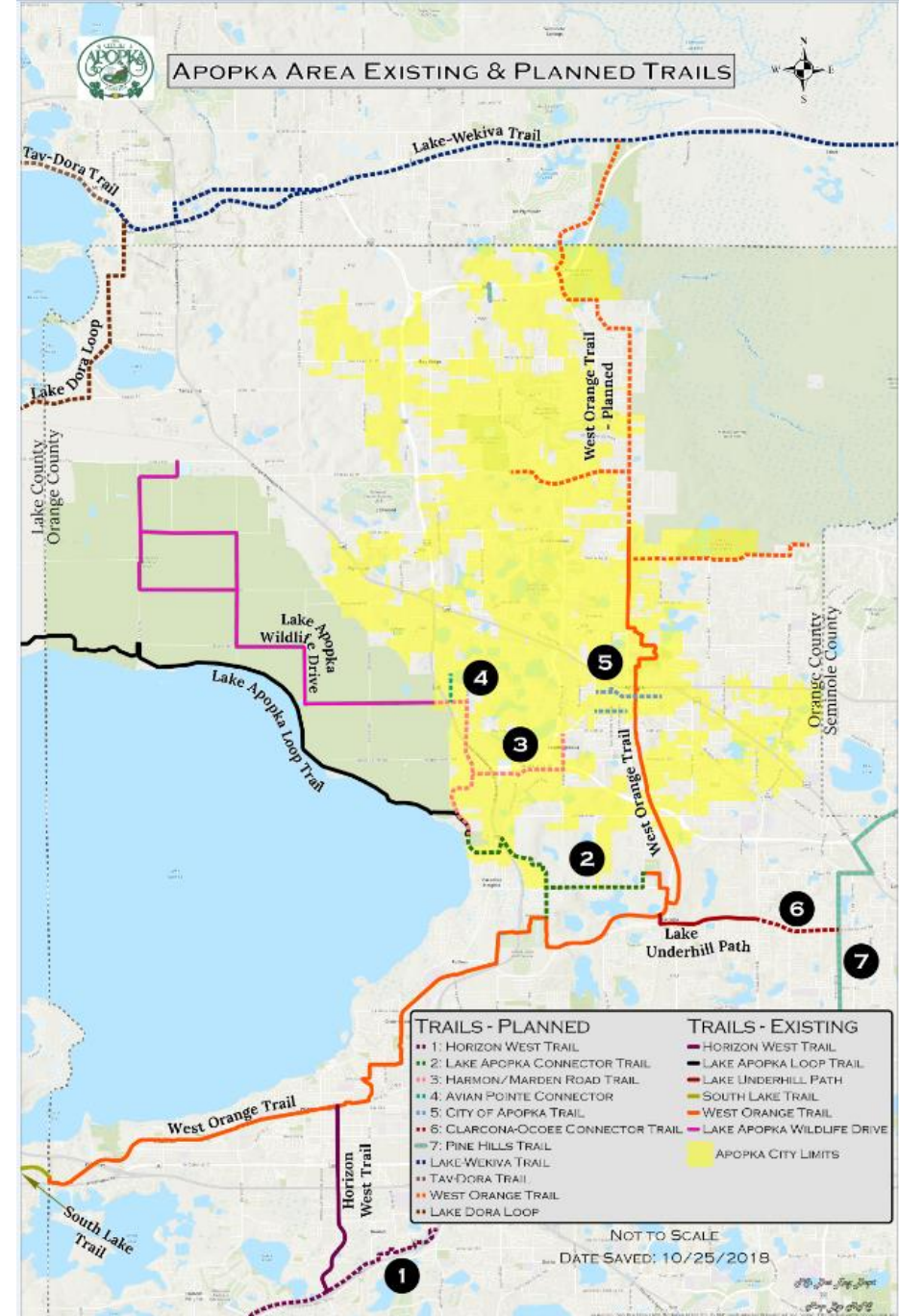


Over 44,000 cars per year on the 11-mile drive through tour !

Non-local visitors contribute about \$3.3 million annually. Each day the Wildlife Drive is open visitors spend over \$22,000 locally.

Multi-Modal Trails ~ walking, bikes and more

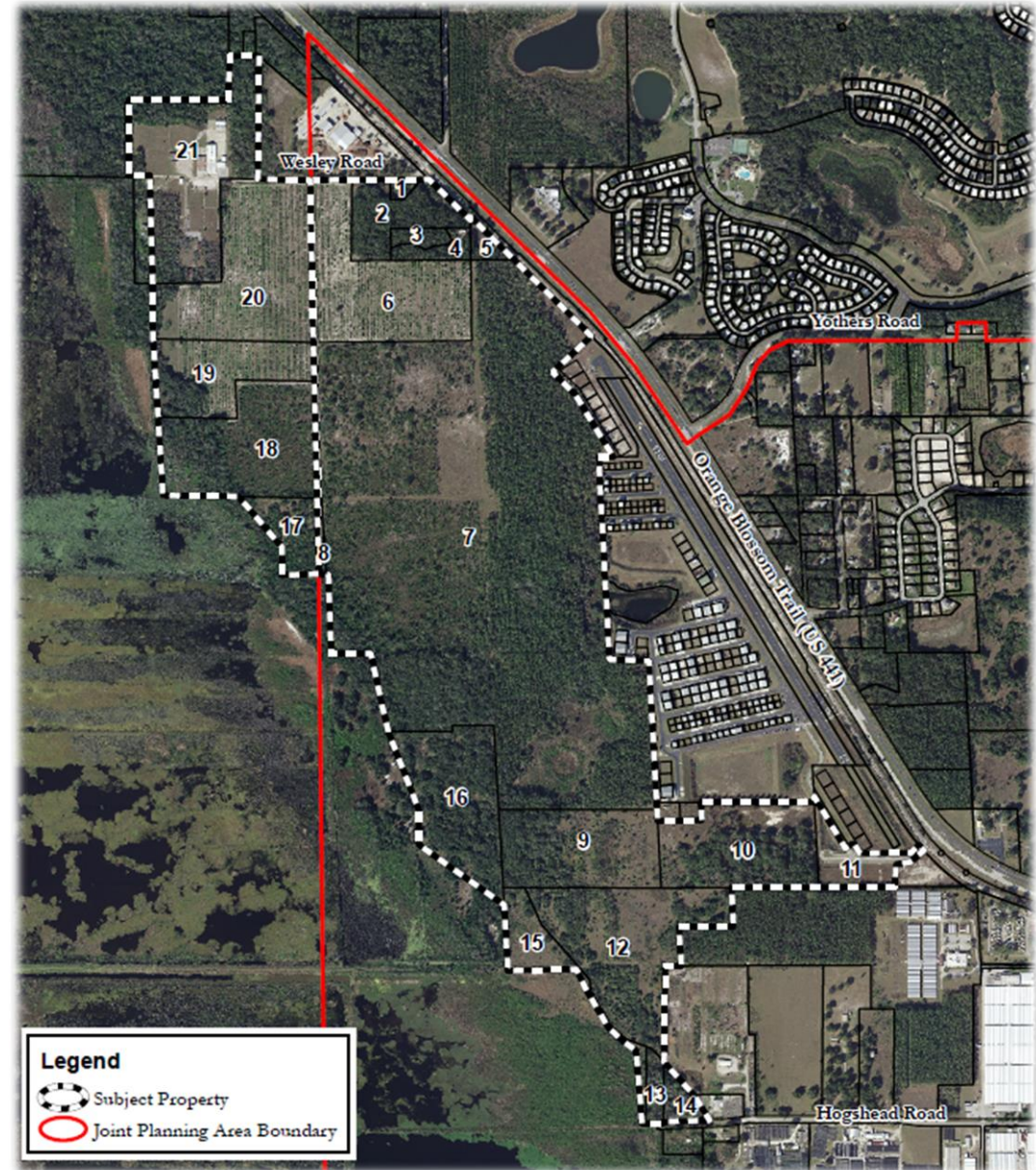
- West Orange Trail
- Downtown Trail
- Lake Apopka Wildlife Trail
- Local City trails
- Connections to the Coast-To-Coast Trail



Unique Developments

- **Fly-In community** – over 450 acres annexing for a new community adjacent to the Orlando Apopka Country Airport.
- **429 West** – Mixed use project with residential, commercial and recreation features.
- **Kelly Park Interchange and the Form-Based Code** – Mixed use development area within 1-mile of the interchange.

- **Fly-In Community**
at the Orlando Apopka Airport
 - 450 acres
 - Single-Family residential homes
 - Residential hanger homes
 - First Landings Aviation – Flight School and Aircraft Service Center



○ 429 West

- 80 acres of mixed use development
- Commercial core – 250,000 sq. ft.
- Apartments – 1,000 units (phased)
- Condominiums
- 120 units AL/MC (Assisted Living Memory Care Community)
- 80 units ILF (Independent Living Facility)
- YMCA – proposed

Access to SR 429, US 441, Plymouth-Sorrento Rd.
and 2 ½ miles west of downtown Apopka



○ Kelly Park Interchange – Form-Based Code (KPI-FBC)

Adopted June 21, 2017

5 Character Zones:

- Village Center
- Employment
- Neighborhood
 - MEdTech Campus Overlay District
- Interchange
- Transition
- Neighborhood

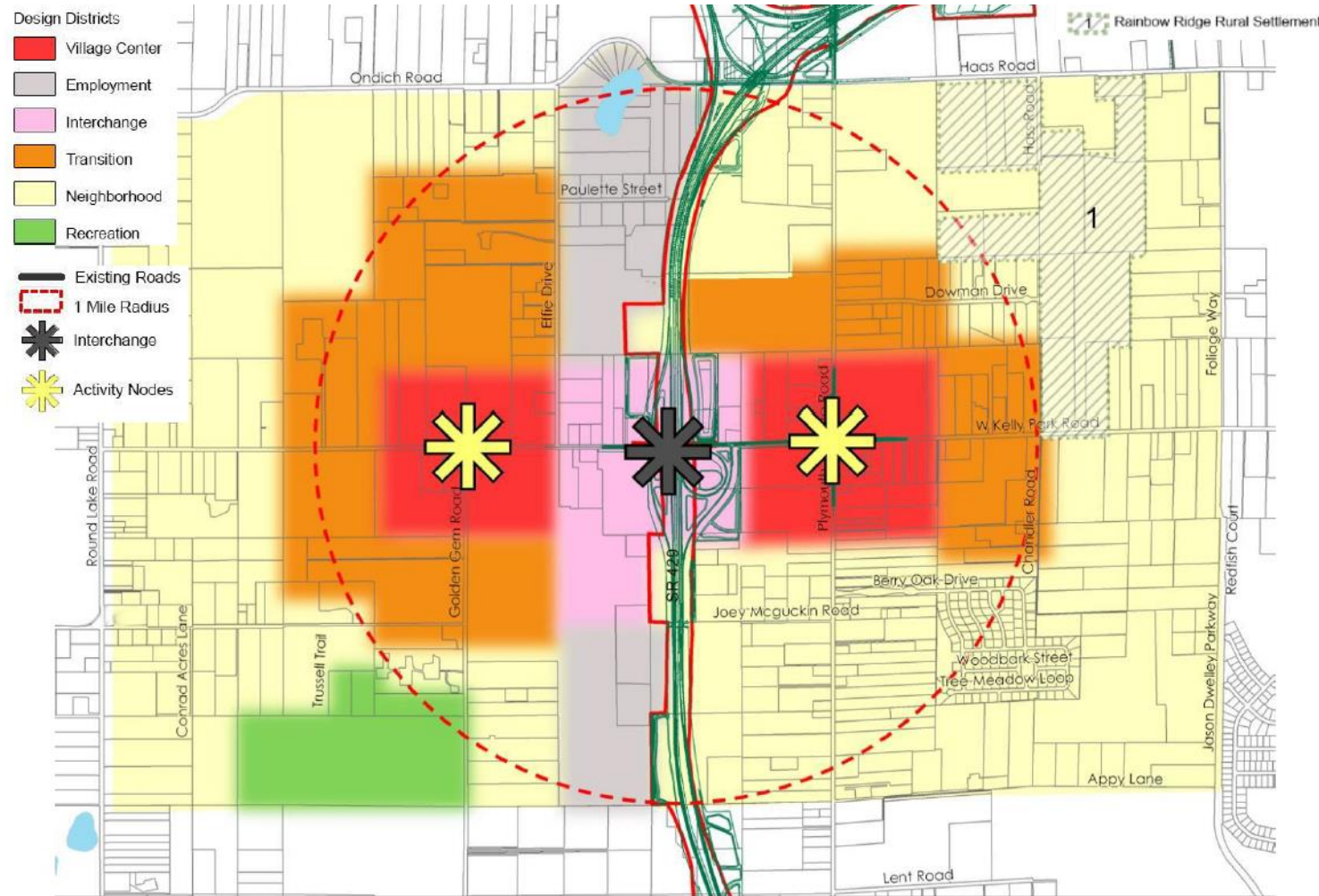
MEdTech Campus Overlay District
(**M**edical, **E**ducational & **T**echnological)
Adopted into the FBC September 19, 2018

Size limitations:

7,500 Single Family units

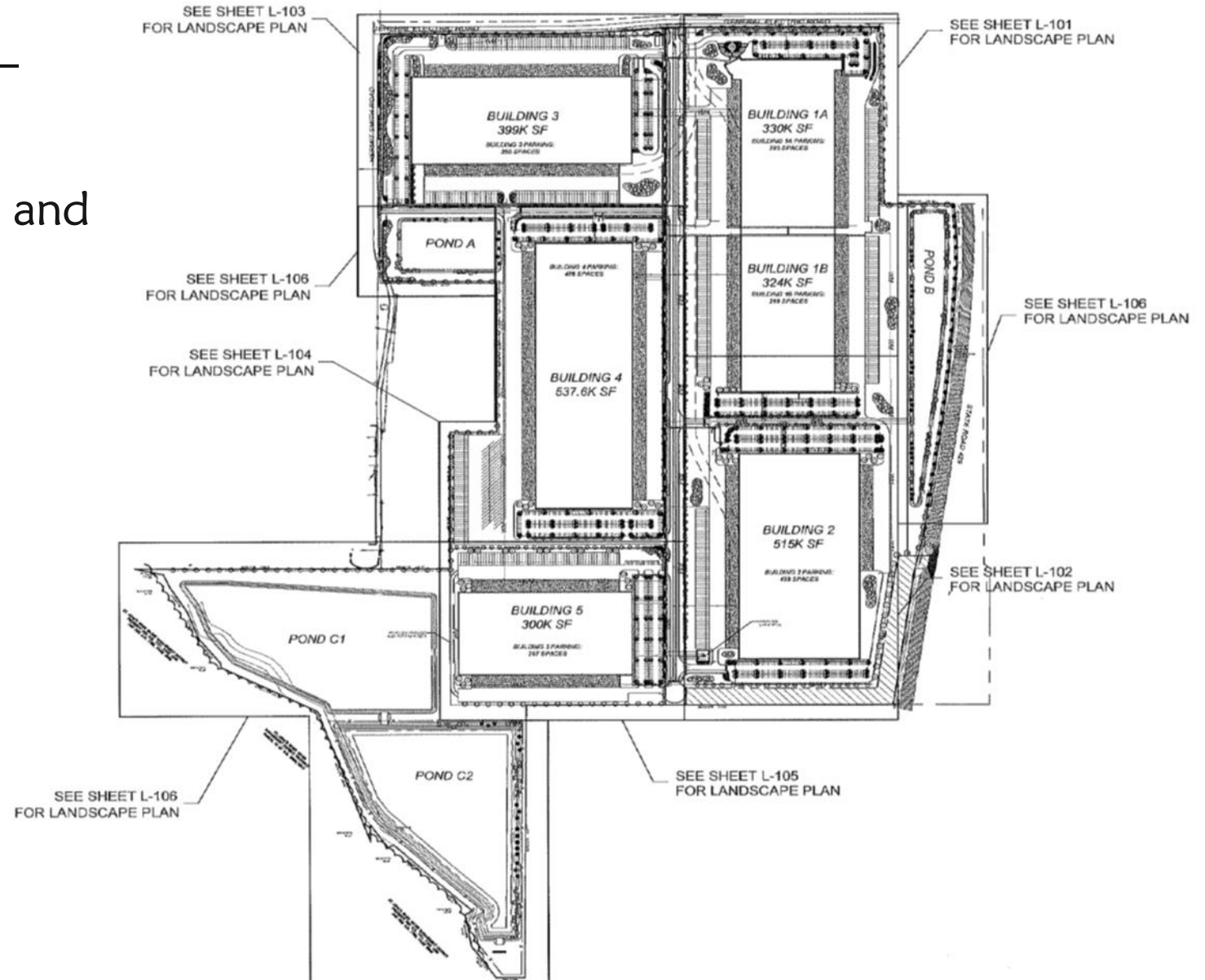
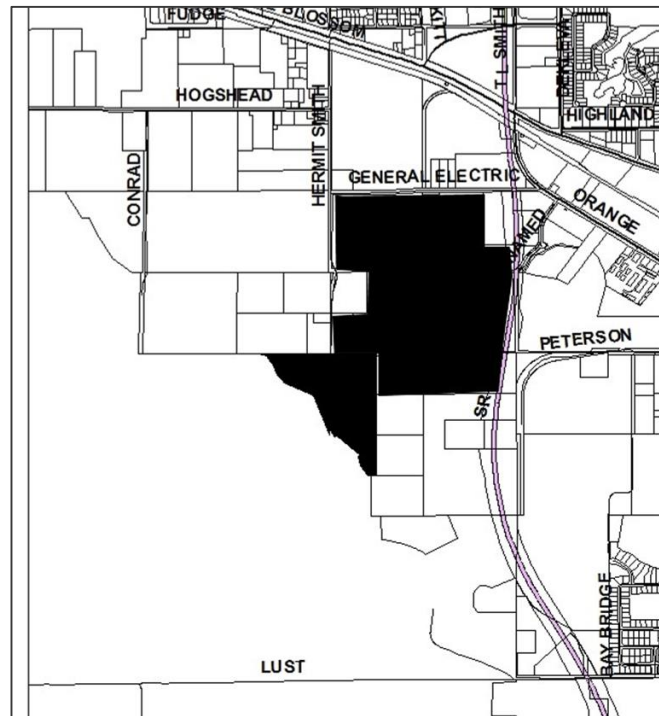
8,500 Multi-family units

22 million sq. ft. commercial/Services



Industrial Growth

- Mid-Florida Logistics Park –
 - 188.89 acres
 - 2,400,000 sq. ft. of industrial and warehouse buildings
 - Rail access



Heart of Apopka East Shore District

- Florida Hospital – Project of the Year Award -
 - Marden Ridge Apartments
 - Interchange: SR 429, SR 451, SR 414
 - 2,657 Total Acres
 - 610 acres Neighborhood Residential
 - 516 acres Mixed Use
 - 527 acres Research, Technology and Education
 - 226 acres New Market (retail & commerce)



Downtown CRA Projects

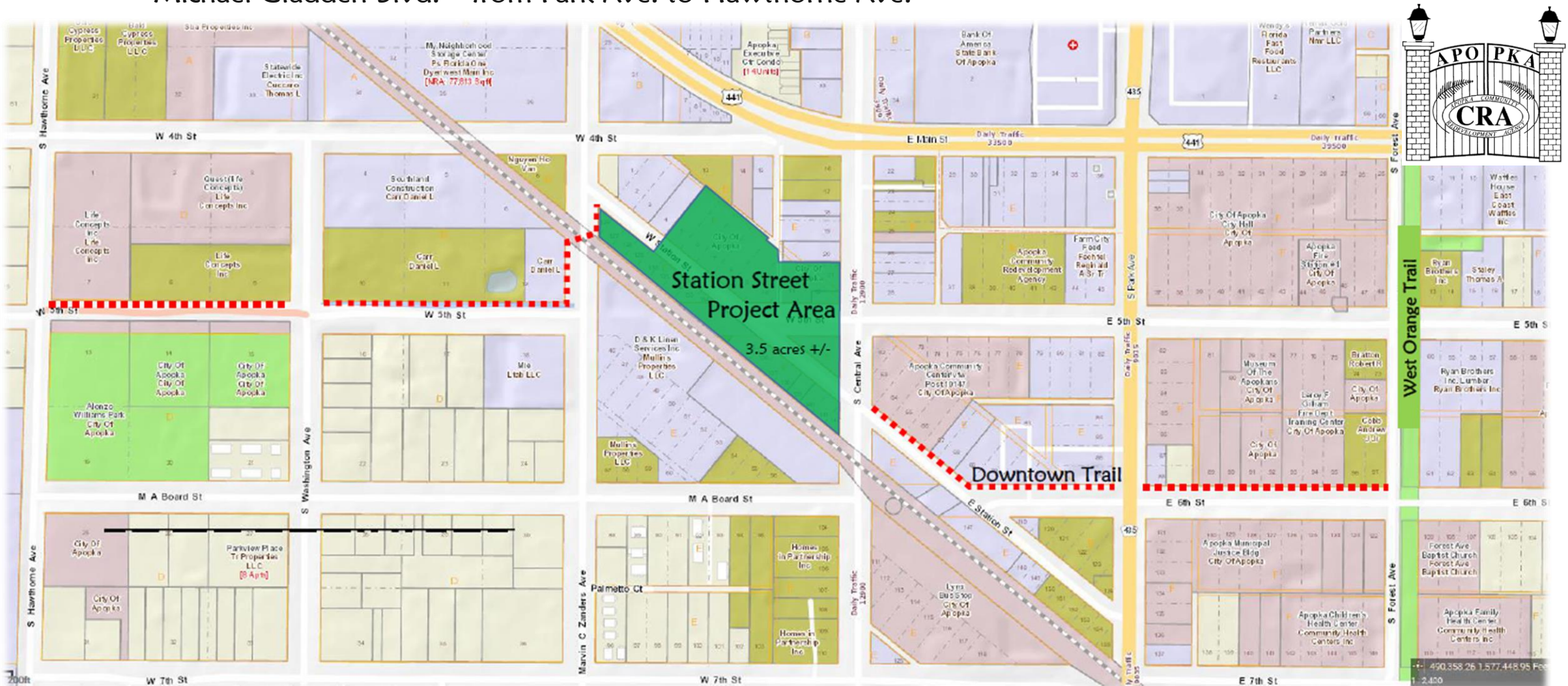
Community Redevelopment Agency



- Assistance Programs
 - Façade Renovation
 - Building Code
 - Residential Fee (Impact Fees for new residential development)
 - Residential Renovation
- 5th Street Parking Lot – over 100 spaces, LID landscape, lighting
- Downtown Trail for Bicycles & Pedestrians – 10’ trail, lighting and trees
- **Down Apopka Triangle (DAT Place) – Station Street Project**

○ Downtown Trails – 10' trail, lighting and trees

- 5th Street from Alonzo Williams Park to the Station Street Project; then Station Street and 6th Street to the West Orange Trail; then to the City Center at McGee Ave. Connection up Central and Park Ave. to “DAT”
- Michael Gladden Blvd. – from Park Ave. to Hawthorne Ave.



West Orange Trail

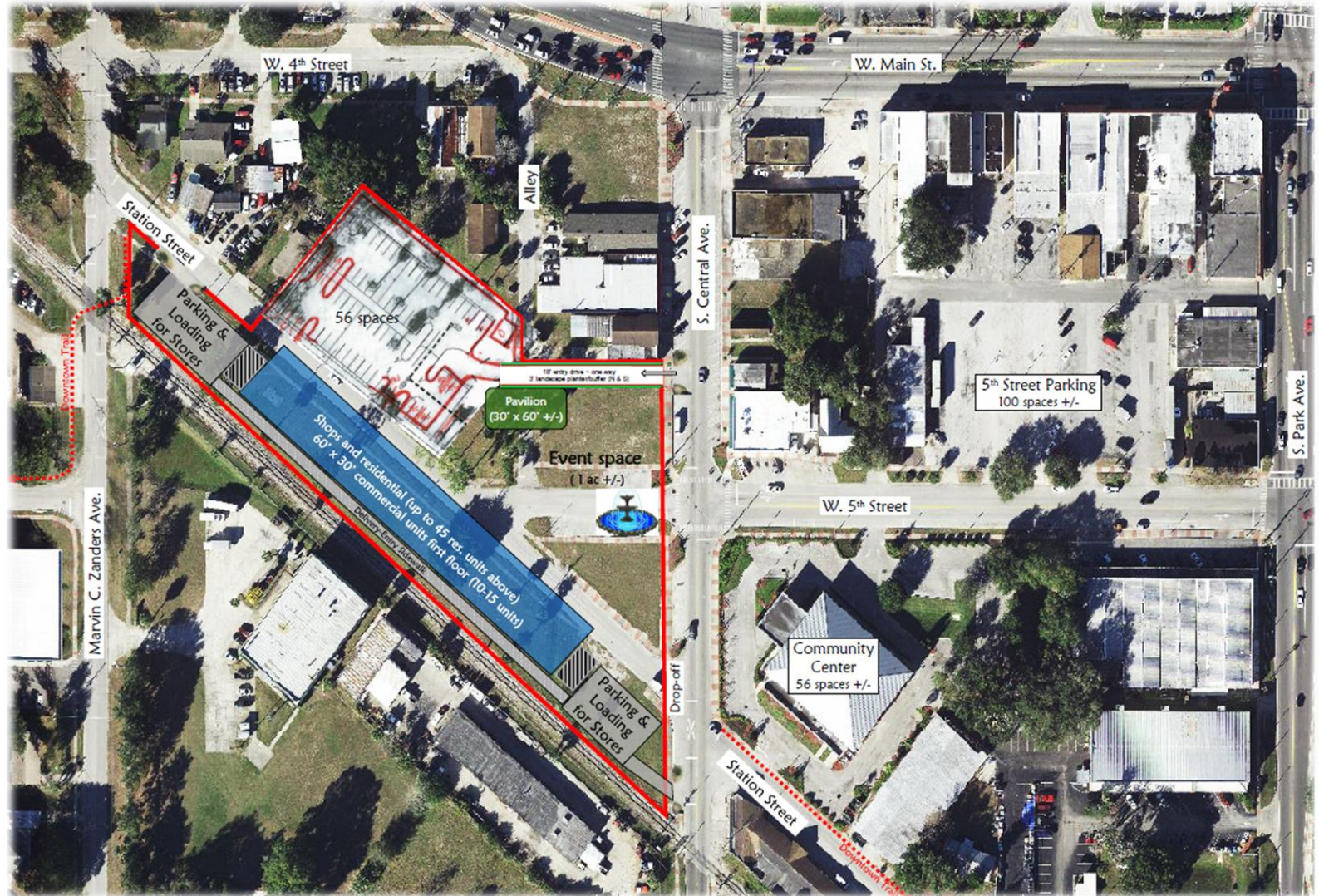
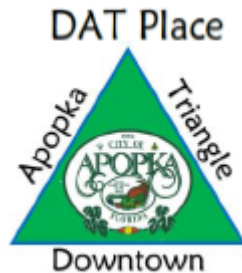
S Forest Ave

490.558.26 1.577.448.95
-2.450



○ Down Apopka Triangle (DAT Place) – Station Street Project

- Mixed use project
- 50 +/- residential units
- Retail space
- ¾ to 1 acre event park
- Parking
- 3.6 acres
- In the heart of downtown Apopka



Economic Development and Job Creation

○ UCF Incubator

New Location: 205 N. Park Ave.



**Business Incubation
Program**

UNIVERSITY OF CENTRAL FLORIDA

UCFBIP Services Provided:

- On-site business coaching and mentoring
- Entrepreneurship curriculum, seminars
- Access to community leaders and an exceptional advisory board
- Shared resources
 - Reception area, conference rooms, training room, business library, high speed internet, work/break rooms and office equipment
- Networking opportunities
- Access to interns/students
- Adaptable space
- Flexible lease
- Off-Site client availability
- Women and minority contractor certification education and training.



Public Utilities

○ Sewer Plant

- Capacity: 8 Million Gallons per day (5 MGD on east side, 3 MGD on west side)
- Cost: \$62 million
- Efficiency increased with modern technology and components. Meeting and exceeding (well below) permit requirements, especially nitrogen removal.
- Permit requirement < 10 PPM. Currently at or below 5 PPM



Fire Department

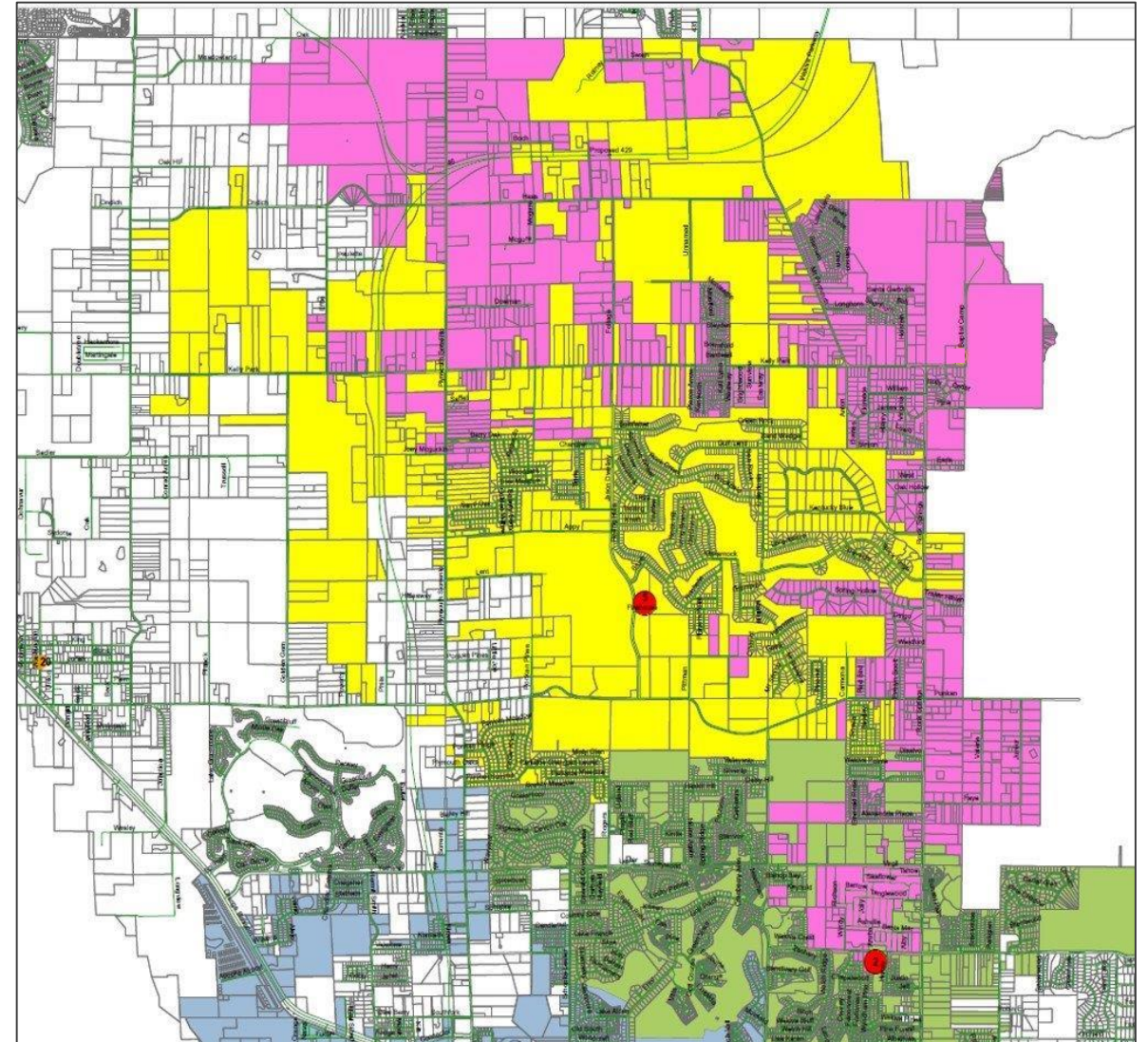
- ISO Class 1
- Station 5 at 1685 Firehouse Lane added a second ambulance.
- Station 6 at Florida Hospital



Fire Department

- Apopka completed an Interlocal Agreement with Orange County to take over the fire and medical services of the Rock Springs Road and Kelly Park Road corridors and areas north to the Lake County line.

North contract area in Pink



Police Department



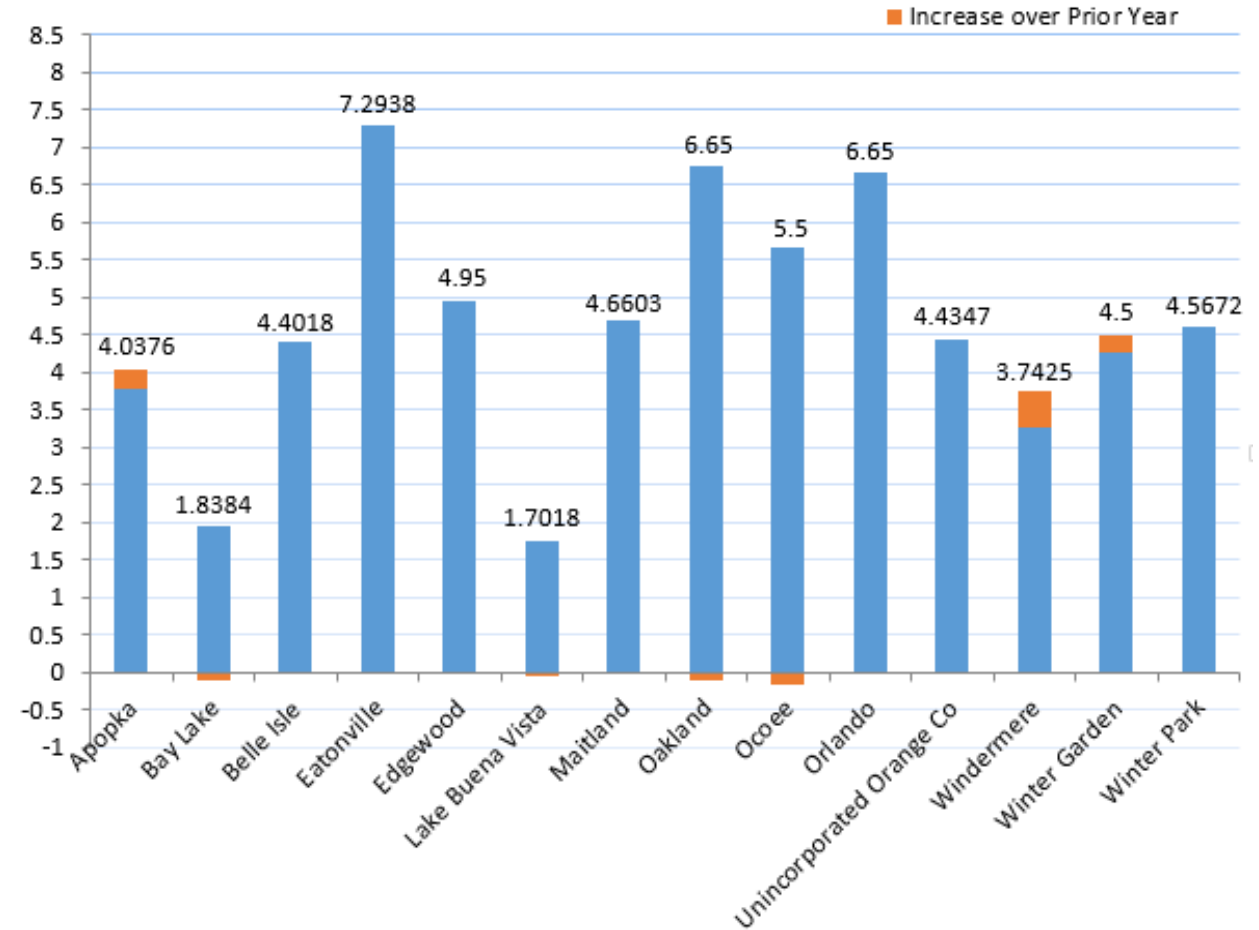
- **State of Florida Accreditation**
- **School Resource Officers** for all schools within the Apopka City limits.
 - Sworn officer in each Elementary and Middle Schools and two in the High School.
- **Crime and prevention statistics:**
 - 18% drop in Property Crimes through this time last year.
 - Increased the number of detectives in the criminal investigations unit who are actively investigating 66% MORE cases than last year.
 - Leads central Florida in the number of “Risk Protection Orders” which allows a court to prohibit a violent or mentally ill person from purchasing or possessing a firearm.
- **Enhanced Management Training**
 - Command Officer Training, Nationally recognized police supervisory training from the University of Louisville: 5 sergeants
 - FBI National Academy: 1 Captain
 - Certified Public Manager Course by FSU: 2 Lieutenants



Budget

- Apopka millage for Fiscal Year 2019: 4.0376 per \$1,000 of assessed value.
Still the lowest millage of any full service municipality in Orange County.
- FY 2019 budget: \$114,691,561
This is a decrease of \$9,981,148 or 8% less than the FY 2018 budget.

Municipal Tax Rate Comparison Orange County



Budget

- No General Fund reserves used or any borrowing for FY 2019 Budget
- School Resource Officers for all schools within the Apopka City limits.
- Two new Building-Safety Division positions to help expedite the permitting process.
- Red Light Camera program eliminated as of December 31, 2018



Apopka ~ Looking forward . . .

